

A rapidly deployable lightweight mast for areas where non-conductive or R.F. invisibility is desirable.



Specs	Information
Sections	50mm OD x 2m x 6mm wall
Height	2.5m - 11Mtrs (18 - 36 feet)
Guy Material	Pre-stretched polyester or parafil
Head Load	40-60Kg horizontal
Erection	No erection kit required
Finish	All drab olive and matt black

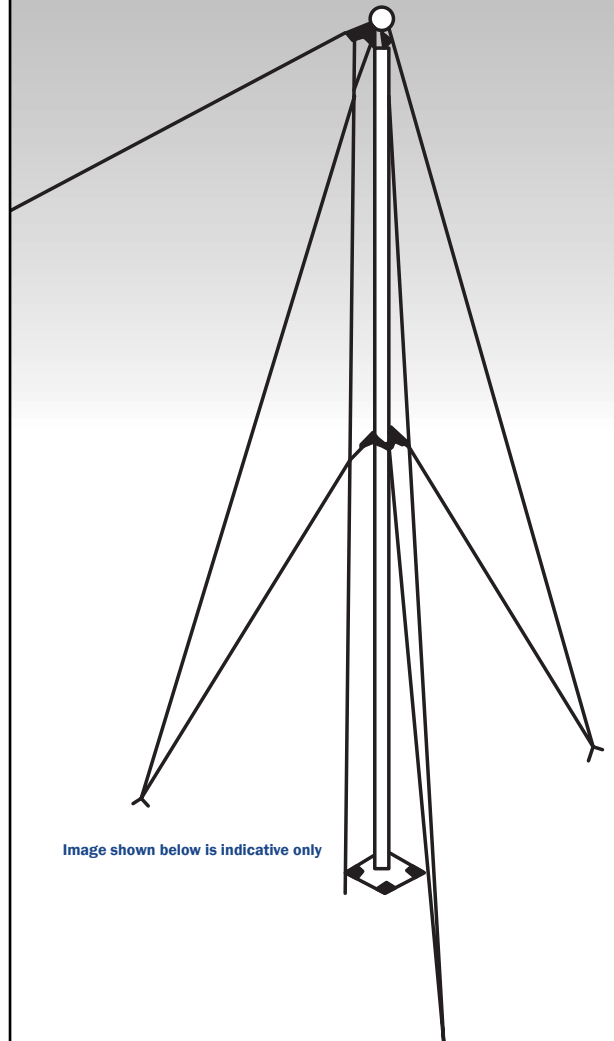


Image shown below is indicative only